



PNEUMADYNE

Composite Push-in Fittings



Setting a new standard for:

- Connectors
- Fluid Management
- Value
- Availability

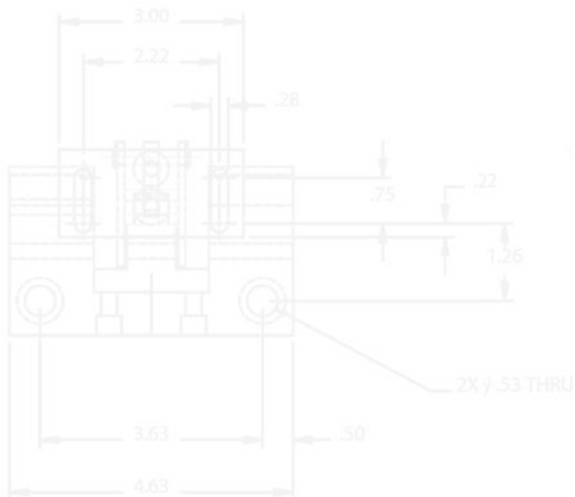


Table of Contents

COMPOSITE PUSH-IN FITTINGS.....	2-11
STRAIGHT CONNECTORS	4-5
ELBOWS	5-6
TEES	7-8
Y CONNECTORS	7-8
BULKHEAD CONNECTORS	9
REDUCERS	10
CROSSES	11
UNION BRANCHES	11
PLUGS	11
 FLOW CONTROLS.....	 12-17
COMPOSITE	16
METAL	17
 POLYURETHANE TUBING.....	 18-19

Features

- Black Polybutylene and nickel plated brass construction
- Oval release button eases tubing disconnection
- Threaded sealant standard on pipe threads
- Captive o-ring seals (10-32 UNF threads only)
- Stainless steel gripper ring
- Recommended for use with 95A Polyurethane, Polyethylene and Nylon Tubing
- Vacuum applications to 29.5" Hg



Composite Push-in Fittings

Pneumadyne's new Composite Push-in fittings are a quick and convenient method of connecting components throughout a pneumatic system. Designed for use with polyurethane, polyethylene and nylon tubing, these fittings accommodate tube sizes ranging from 1/8" OD to 1/2" OD. The oval design of the release button provides a larger surface area making tubing disconnection easier than standard round style collets.

A variety of configurations are available to accommodate connection requirements. To ensure a leakproof fit, thread sealant is standard on all male pipe threads while the 10-32 UNF thread features a captive o-ring for a superior seal.

Performance Data

Operating Pressure: 29.5" Hg to 150 psi

Max Pressure: 250 psi

Temperature Range: 32° to 140°F

Media: Air, Vacuum

Materials of Construction

Body: Polybutylene and nickel plated brass

Seals: Buna-N

Collet (Release Button): Polyacetate

Gripper Ring: Stainless Steel

Collar: Zinc Dichromate

Tubing Installation:

1. Use a sharp tube cutter to ensure a clean, square cut. The outer diameter of the tube must be free of sharp edges, debris, burrs and score marks.
2. Insert the tubing into the fitting until it stops.
3. Gently pull the tubing back to engage the gripper ring. Internal stainless steel gripper teeth grasp the tube and prevent it from being released.

Tubing Disconnection:

1. Push in the oval release button to retract the gripper teeth.
2. Pull the tubing out while the release button is depressed.

Product Number Diagram

Composite Push-In Fittings

CPB250 - 1/8

Product Line

CP = Composite Push-in

Fitting Configuration

- B = Male Connector
- BR = Male Connector, Round
- BU = Bulkhead Union
- ELS = Elbow, Extended Male Swivel
- EUB = Elbow, Bulkhead
- FB = Female Connector
- FBT = Female Branch Tee
- FBU = Female Bulkhead
- LS = Elbow, Male Swivel
- P = Plug
- RT = Tee, Reducing
- RTS = Run Tee, Male Swivel
- RU = Union, Reducing
- SR = Stem Reducer
- T = Union Tee
- TS = Branch Tee, Male Swivel
- TSE = Elbow, Tube to Stem
- TSER = Elbow, Reducing Tube to Stem
- U = Union
- UB = Union Branch
- UE = Union Elbow
- X = Cross
- Y = Union Y
- YS = Y, Male Swivel

Connector Options

Tube OD

- 125 = 1/8 OD
- 156 = 5/32 OD (4mm)
- 250 = 1/4 OD
- 312 = 5/16 OD (8mm)
- 375 = 3/8 OD
- 500 = 1/2 OD

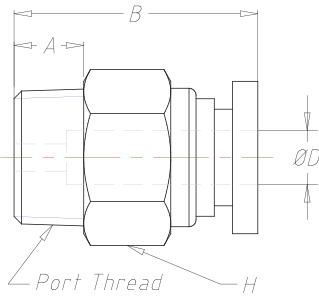
Thread Size

- 1032 = 10-32 UNF
- 1/8 = 1/8 NPT
- 1/4 = 1/4 NPT
- 3/8 = 3/8 NPT
- 1/2 = 1/2 NPT

Recommended Torque for Different Thread Specification

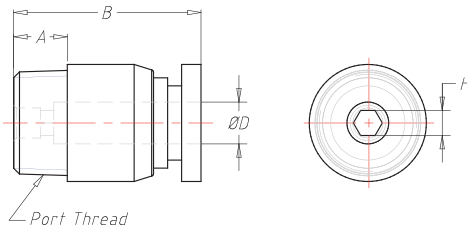
Thread Type	Thread Type	Torque
UNF (Unified)	10-32	13-16.5 in/lbs
NPT Thread	1/8	5-6.5 ft/lbs
	1/4	8.7-10.1 ft/lbs
	3/8	15.9-17.3 ft/lbs
	1/2	20.25-21.7 ft/lbs

Male Connector



Part Number	Tube $\varnothing D$	Thread Size	A	B	H
CPB156-1032	5/32" OD	10-32 UNF	0.1	0.7	7/16
CPB156-1/8	5/32" OD	1/8 NPT	0.2	0.7	7/16
CPB156-1/4	5/32" OD	1/4 NPT	0.4	0.7	9/16
CPB250-1032	1/4" OD	10-32 UNF	0.1	0.8	1/2
CPB250-1/8	1/4" OD	1/8 NPT	0.2	0.8	1/2
CPB250-1/4	1/4" OD	1/4 NPT	0.4	0.8	9/16
CPB250-3/8	1/4" OD	3/8 NPT	0.4	0.8	11/16
CPB312-1/8	5/16" OD	1/8 NPT	0.2	1.0	9/16
CPB312-1/4	5/16" OD	1/4 NPT	0.4	1.0	9/16
CPB312-3/8	5/16" OD	3/8 NPT	0.4	0.9	11/16
CPB375-1/8	3/8" OD	1/8 NPT	0.2	1.1	11/16
CPB375-1/4	3/8" OD	1/4 NPT	0.4	1.2	11/16
CPB375-3/8	3/8" OD	3/8 NPT	0.4	1.1	11/16
CPB500-1/4	1/2" OD	1/4 NPT	0.4	1.3	7/8
CPB500-3/8	1/2" OD	3/8 NPT	0.4	1.1	7/8
CPB500-1/2	1/2" OD	1/2 NPT	0.5	1.1	7/8

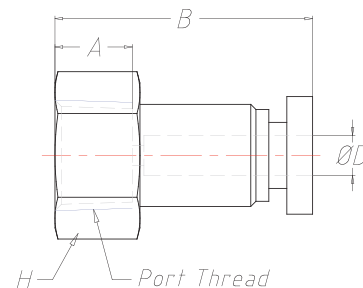
Round Male Connector



Part Number	Tube $\varnothing D$	Thread Size	A	B	H	Fitting $\varnothing D$ +/- .01
CPBR156-1032	5/32" OD	10-32 UNF	0.1	0.7	N/A	0.40
CPBR156-1/8	5/32" OD	1/8 NPT	0.2	0.7	3mm	0.40
CPBR156-1/4	5/32" OD	1/4 NPT	0.4	0.7	3mm	0.55
CPBR250-1032	1/4" OD	10-32 UNF	0.1	0.8	N/A	0.47
CPBR250-1/8	1/4" OD	1/8 NPT	0.2	0.8	4mm	0.47
CPBR250-1/4	1/4" OD	1/4 NPT	0.4	0.8	4mm	0.55
CPBR250-3/8	1/4" OD	3/8 NPT	0.4	0.8	4mm	0.67
CPBR312-1/8	5/16" OD	1/8 NPT	0.2	1.0	5mm	0.55
CPBR312-1/4	5/16" OD	1/4 NPT	0.4	1.0	6mm	0.55
CPBR312-3/8	5/16" OD	3/8 NPT	0.2	1.1	6mm	0.67
CPBR375-1/8	3/8" OD	1/8 NPT	0.2	1.1	5mm	0.67
CPBR375-1/4	3/8" OD	1/4 NPT	0.4	1.2	6mm	0.67
CPBR375-3/8	3/8" OD	3/8 NPT	0.4	1.1	8mm	0.67

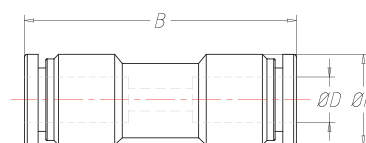
Part Number	Tube ØD	Thread Size	A	B	H
CPFB156-1/8	5/32" OD	1/8 NPT (F)	0.3	1.0	9/16
CPFB156-1/4	5/32" OD	1/4 NPT (F)	0.4	1.1	11/16
CPFB250-1/8	1/4" OD	1/8 NPT (F)	0.4	1.1	11/16
CPFB250-1/4	1/4" OD	1/4 NPT (F)	0.4	1.1	11/16
CPFB312-1/8	5/16" OD	1/8 NPT (F)	0.3	1.0	9/16
CPFB312-1/4	5/16" OD	1/4 NPT (F)	0.4	1.3	11/16
CPFB312-3/8	5/16" OD	3/8 NPT (F)	0.4	1.2	7/8
CPFB375-1/4	3/8" OD	1/4 NPT (F)	0.4	1.3	11/16
CPFB375-3/8	3/8" OD	3/8 NPT (F)	0.4	1.3	7/8
CPFB375-1/2	3/8" OD	1/2 NPT (F)	0.5	1.4	7/8
CPFB500-1/4	1/2" OD	1/4 NPT (F)	0.4	1.3	7/8
CPFB500-3/8	1/2" OD	3/8 NPT (F)	0.4	1.4	7/8

Female Connector



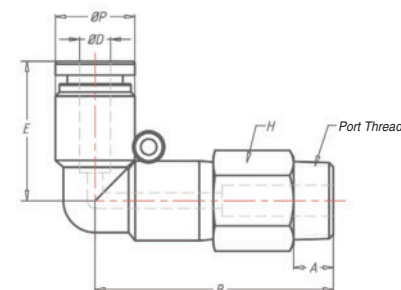
Part Number	Tube ØD	B	ØP
CPU156	5/32" OD	1.2	0.4
CPU250	1/4" OD	1.3	0.5
CPU312	5/16" OD	1.5	0.5
CPU375	3/8" OD	1.8	0.7
CPU500	1/2" OD	1.9	0.8

Union Connector

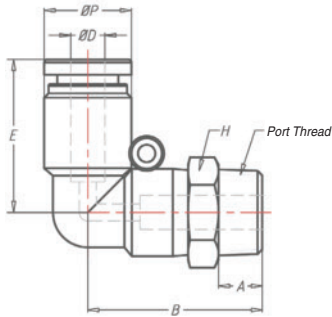


Part Number	Tube ØD	Thread Size	A	B	E	H	ØP
CPELS156-1032	5/32" OD	10-32 UNF	0.1	1.2	0.7	7/16	0.4
CPELS156-1/8	5/32" OD	1/8 NPT	0.2	1.2	0.7	7/16	0.4
CPELS250-1/8	1/4" OD	1/8 NPT	0.2	1.5	0.7	1/2	0.5
CPELS250-1/4	1/4" OD	1/4 NPT	0.4	1.6	0.7	9/16	0.5
CPELS250-3/8	1/4" OD	3/8 NPT	0.4	1.6	0.7	11/16	0.5
CPELS312-1/8	5/16" OD	1/8 NPT	0.2	1.7	0.9	9/16	0.5
CPELS312-1/4	5/16" OD	1/4 NPT	0.4	1.7	0.9	9/16	0.5
CPELS312-3/8	5/16" OD	3/8 NPT	0.4	1.8	0.9	11/16	0.5
CPELS375-1/8	3/8" OD	1/8 NPT	0.2	2.1	1	11/16	0.7
CPELS375-1/4	3/8" OD	1/4 NPT	0.4	2.2	1	11/16	0.7
CPELS375-3/8	3/8" OD	3/8 NPT	0.4	2.3	1	11/16	0.7
CPELS500-1/4	1/2" OD	1/4 NPT	0.4	2.3	1.1	7/8	0.8
CPELS500-3/8	1/2" OD	3/8 NPT	0.4	2.4	1.1	7/8	0.8
CPELS500-1/2	1/2" OD	1/2 NPT	0.5	2.5	1.1	7/8	0.8

Extended Male Elbow, Swivel

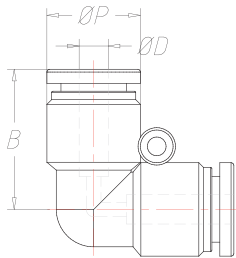


Male Elbow, Swivel



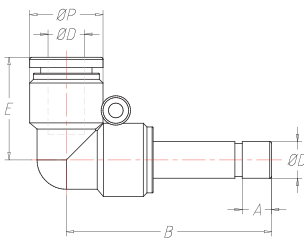
Part Number	Tube ØD	Thread Size	A	B	E	H	ØP
CPLS156-1032	5/32" OD	10-32 UNF	0.1	0.9	0.7	7/16	0.4
CPLS156-1/8	5/32" OD	1/8 NPT	0.2	0.8	0.7	1/2	0.4
CPLS156-1/4	5/32" OD	1/4 NPT	0.4	1.0	0.7	9/16	0.4
CPLS250-1032	1/4" OD	10-32 UNF	0.1	0.9	0.7	1/2	0.5
CPLS250-1/8	1/4" OD	1/8 NPT	0.2	1.0	0.7	1/2	0.5
CPLS250-1/4	1/4" OD	1/4 NPT	0.4	1.1	0.7	9/16	0.5
CPLS250-3/8	1/4" OD	3/8 NPT	0.4	1.1	0.7	11/16	0.5
CPLS312-1/8	5/16" OD	1/8 NPT	0.2	1.1	0.9	9/16	0.5
CPLS312-1/4	5/16" OD	1/4 NPT	0.4	1.2	0.9	9/16	0.5
CPLS312-3/8	5/16" OD	3/8 NPT	0.4	1.3	0.9	11/16	0.5
CPLS375-1/8	3/8" OD	1/8 NPT	0.2	1.3	1	11/16	0.7
CPLS375-1/4	3/8" OD	1/4 NPT	0.4	1.4	1	11/16	0.7
CPLS375-3/8	3/8" OD	3/8 NPT	0.4	1.5	1	11/16	0.7
CPLS500-1/4	1/2" OD	1/4 NPT	0.4	1.5	1.1	7/8	0.8
CPLS500-3/8	1/2" OD	3/8 NPT	0.4	1.5	1.1	7/8	0.8
CPLS500-1/2	1/2" OD	1/2 NPT	0.5	1.6	1.1	7/8	0.8

Union Elbow



Part Number	Tube ØD	B	ØP
CPUE156	5/32" OD	0.7	0.4
CPUE250	1/4" OD	0.7	0.5
CPUE312	5/16" OD	0.9	0.5
CPUE375	3/8" OD	1.0	0.7
CPUE500	1/2" OD	1.1	0.8

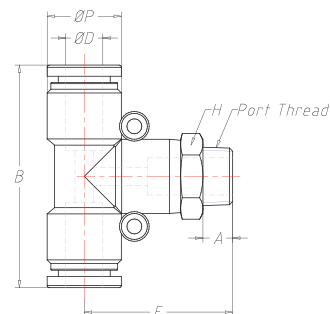
Tube to Stem Elbow



Part Number	Tube ØD	A	B	E	ØP
CPTSE156	5/32" OD	0.2	1.2	0.7	0.4
CPTSE250	1/4" OD	0.2	1.4	0.7	0.5
CPTSE312	5/16" OD	0.3	1.6	0.9	0.5
CPTSE375	3/8" OD	0.3	2.0	1	0.7
CPTSE500	1/2" OD	0.3	2.1	1.1	0.8

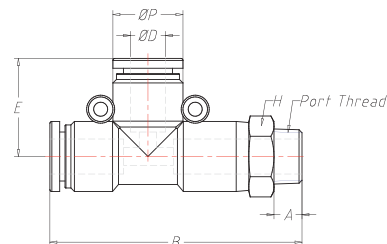
Part Number	Tube ØD	Thread Size	A	B	E	H	ØP
CPTS156-1032	5/32" OD	10-32 UNF	0.1	1.4	0.8	7/16	0.4
CPTS156-1/8	5/32" OD	1/8 NPT	0.2	1.4	1	7/16	0.4
CPTS156-1/4	5/32" OD	1/4 NPT	0.4	1.4	1.1	9/16	0.4
CPTS250-1032	1/4" OD	10-32 UNF	0.1	1.5	0.9	1/2	0.5
CPTS250-1/8	1/4" OD	1/8 NPT	0.2	1.5	1	1/2	0.5
CPTS250-1/4	1/4" OD	1/4 NPT	0.4	1.5	1.1	9/16	0.5
CPTS250-3/8	1/4" OD	3/8 NPT	0.4	1.5	1.2	11/16	0.5
CPTS312-1/8	5/16" OD	1/8 NPT	0.2	1.7	1.1	9/16	0.5
CPTS312-1/4	5/16" OD	1/4 NPT	0.4	1.7	1.2	9/16	0.5
CPTS312-3/8	5/16" OD	3/8 NPT	0.4	1.7	1.3	11/16	0.5
CPTS375-1/8	3/8" OD	1/8 NPT	0.2	2.2	1.3	11/16	0.7
CPTS375-1/4	3/8" OD	1/4 NPT	0.4	2.2	1.4	11/16	0.7
CPTS375-3/8	3/8" OD	3/8 NPT	0.4	2.2	1.5	11/16	0.7
CPTS375-1/2	3/8" OD	1/2 NPT	0.5	2.2	1.6	7/8	0.7
CPTS500-1/4	1/2" OD	1/4 NPT	0.4	2.3	1.5	7/8	0.8
CPTS500-3/8	1/2" OD	3/8 NPT	0.4	2.3	1.6	7/8	0.8
CPTS500-1/2	1/2" OD	1/2 NPT	0.5	2.3	1.6	7/8	0.8

Male Branch Tee, Swivel

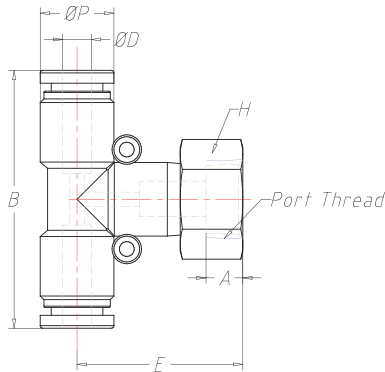


Part Number	Tube ØD	Thread Size	A	B	E	H	ØP
CPRTS156-1032	5/32" OD	10-32 UNF	0.1	1.5	0.7	7/16	0.4
CPRTS156-1/8	5/32" OD	1/8 NPT	0.2	1.6	0.7	7/16	0.4
CPRTS156-1/4	5/32" OD	1/4 NPT	0.4	1.7	0.7	9/16	0.4
CPRTS250-1032	1/4" OD	10-32 UNF	0.1	1.6	0.7	1/2	0.5
CPRTS250-1/8	1/4" OD	1/8 NPT	0.2	1.8	0.7	1/2	0.5
CPRTS250-1/4	1/4" OD	1/4 NPT	0.4	1.9	0.7	9/16	0.5
CPRTS250-3/8	1/4" OD	3/8 NPT	0.5	2.1	0.7	7/8	0.5
CPRTS312-1/8	5/16" OD	1/8 NPT	0.2	2.0	0.9	9/16	0.5
CPRTS312-1/4	5/16" OD	1/4 NPT	0.4	2.2	0.9	9/16	0.5
CPRTS312-3/8	5/16" OD	3/8 NPT	0.4	2.2	0.9	11/16	0.5
CPRTS375-1/8	3/8" OD	1/8 NPT	0.2	2.4	1.1	11/16	0.7
CPRTS375-1/4	3/8" OD	1/4 NPT	0.4	2.5	1.1	11/16	0.7
CPRTS375-3/8	3/8" OD	3/8 NPT	0.4	2.6	1.1	11/16	0.7
CPRTS375-1/2	3/8" OD	1/2 NPT	0.5	2.7	1.1	7/8	0.7
CPRTS500-1/4	1/2" OD	1/4 NPT	0.2	2.6	1.1	7/8	0.8
CPRTS500-3/8	1/2" OD	3/8 NPT	0.4	2.7	1.1	7/8	0.8
CPRTS500-1/2	1/2" OD	1/2 NPT	0.5	2.8	1.1	7/8	0.8

Male Run Tee, Swivel

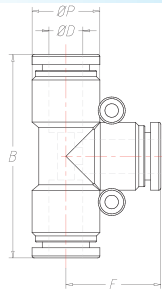


Female Branch Tee



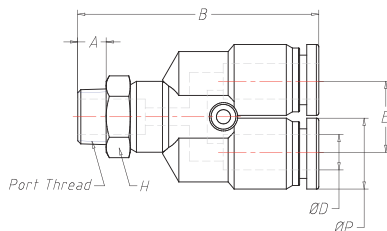
Part Number	Tube ØD	Thread Size	A	B	E	H	ØP
CPFBT156-1/8	5/32" OD	1/8 NPT (F)	0.2	1.4	0.9	9/16	0.4
CPFBT156-1/4	5/32" OD	1/4 NPT (F)	0.3	1.4	1	11/16	0.4
CPFBT250-1032	1/4" OD	10-32 UNF (F)	0.1	1.5	0.8	9/16	0.5
CPFBT250-1/8	1/4" OD	1/8 NPT (F)	0.2	1.5	0.9	9/16	0.5
CPFBT250-1/4	1/4" OD	1/4 NPT (F)	0.3	1.5	1	11/16	0.5
CPFBT250-3/8	1/4" OD	3/8 NPT (F)	0.4	1.5	1.1	7/8	0.5
CPFBT312-1/8	5/16" OD	1/8 NPT (F)	0.2	1.7	1	9/16	0.5
CPFBT312-1/4	5/16" OD	1/4 NPT (F)	0.3	1.7	1.2	11/16	0.5
CPFBT312-3/8	5/16" OD	3/8 NPT (F)	0.4	1.7	1.2	7/8	0.5
CPFBT375-1/8	3/8" OD	1/8 NPT (F)	0.4	2.2	1.4	7/8	0.7
CPFBT375-1/4	3/8" OD	1/4 NPT (F)	0.3	2.2	1.3	11/16	0.7
CPFBT375-3/8	3/8" OD	3/8 NPT (F)	0.4	2.2	1.4	7/8	0.7
CPFBT375-1/2	3/8" OD	1/2 NPT (F)	0.5	2.2	1.4	7/8	0.7
CPFBT500-1/2	1/2" OD	1/2 NPT (F)	0.5	2.3	1.5	7/8	0.8

Union Tee



Part Number	Tube ØD	B	E	ØP
CPT156	5/32" OD	1.4	0.7	0.4
CPT250	1/4" OD	1.5	0.7	0.5
CPT312	5/16" OD	1.7	0.9	0.5
CPT375	3/8" OD	2.2	1.1	0.7
CPT500	1/2" OD	2.3	1.5	0.8

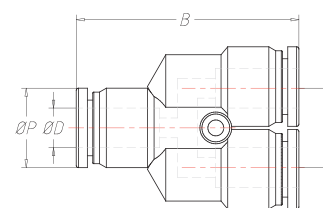
Male Y, Swivel



Part Number	Tube ØD	Thread Size	A	B	E	H	ØP
CPYS156-1032	5/32" OD	10-32 UNF	0.1	1.5	0.4	7/16	0.4
CPYS156-1/8	5/32" OD	1/8 NPT	0.2	1.6	0.4	7/16	0.4
CPYS156-1/4	5/32" OD	1/4 NPT	0.4	1.8	0.4	9/16	0.4
CPYS250-1032	1/4" OD	10-32 UNF	0.1	1.6	0.5	1/2	0.5
CPYS250-1/8	1/4" OD	1/8 NPT	0.2	1.7	0.5	1/2	0.5
CPYS250-1/4	1/4" OD	1/4 NPT	0.4	1.8	0.5	9/16	0.5
CPYS250-3/8	1/4" OD	3/8 NPT	0.4	1.9	0.5	11/16	0.5
CPYS312-1/8	5/16" OD	1/8 NPT	0.2	1.8	0.5	9/16	0.5
CPYS312-1/4	5/16" OD	1/4 NPT	0.4	1.9	0.5	9/16	0.5
CPYS312-3/8	5/16" OD	3/8 NPT	0.4	2.0	0.5	11/16	0.5
CPYS375-1/8	3/8" OD	1/8 NPT	0.2	2.4	0.7	11/16	0.7
CPYS375-1/4	3/8" OD	1/4 NPT	0.4	2.5	0.7	11/16	0.7
CPYS375-3/8	3/8" OD	3/8 NPT	0.4	2.5	0.7	11/16	0.7
CPYS375-1/2	3/8" OD	1/2 NPT	0.5	2.6	0.7	7/8	0.7
CPYS500-1/4	1/2" OD	1/4 NPT	0.2	2.5	0.8	7/8	0.8
CPYS500-3/8	1/2" OD	3/8 NPT	0.4	2.7	0.8	7/8	0.8
CPYS500-1/2	1/2" OD	1/2 NPT	0.4	2.8	0.8	7/8	0.8

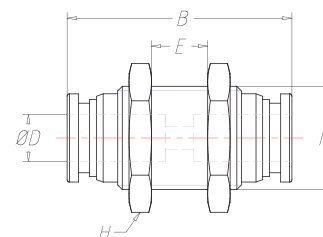
Part Number	Tube ØD	B	E	ØP
CPY156	5/32" OD	1.9	0.4	0.4
CPY250	1/4" OD	1.4	0.5	0.5
CPY312	5/16" OD	1.5	0.5	0.5
CPY375	3/8" OD	1.9	0.7	0.7
CPY500	1/2" OD	2.0	0.8	0.8

Union Y



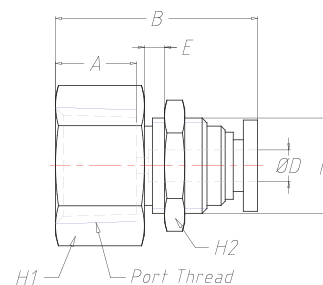
Part Number	Tube ØD	B	E	H	M
CPBU125	1/8" OD	1.1	0.3	9/16	M12X1.0
CPBU156	5/32" OD	1.1	0.3	9/16	M12X1.0
CPBU250	1/4" OD	1.2	0.3	11/16	M14X1.0
CPBU312	5/16" OD	1.4	0.4	3/4	M16X1.0
CPBU375	3/8" OD	1.7	0.5	7/8	M20X1.0
CPBU500	1/2" OD	1.8	0.6	1	M22X1.0

Union Bulkhead



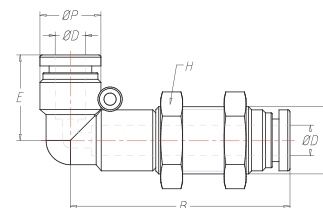
Part Number	Tube ØD	Thread Size	A	B	E	H1	H2	M
CPFBU156-1/8	5/32" OD	1/8 NPT (F)	0.3	0.9	0.1	9/16	9/16	M12
CPFBU156-1/4	5/32" OD	1/4 NPT (F)	0.4	1.0	0.1	11/16	9/16	M12
CPFBU250-1/8	1/4" OD	1/8 NPT (F)	0.3	0.9	0.2	11/16	11/16	M14
CPFBU250-1/4	1/4" OD	1/4 NPT (F)	0.4	1.1	0.2	11/16	11/16	M14
CPFBU250-3/8	1/4" OD	3/8 NPT (F)	0.4	1.1	0.2	11/16	11/16	M14
CPFBU375-1/4	3/8" OD	1/4 NPT (F)	0.4	1.3	0.3	1	1	M20
CPFBU375-3/8	3/8" OD	3/8 NPT (F)	0.4	1.3	0.3	1	1	M20
CPFBU375-1/2	3/8" OD	1/2 NPT (F)	0.5	1.4	0.3	1	1	M20

Female Bulkhead

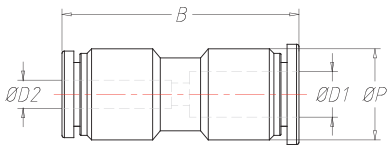


Part Number	Tube ØD	B	E	H	M	ØP
CPEUB156	5/32" OD	1.7	0.7	9/16	M12	0.4
CPEUB250	1/4" OD	1.8	0.7	11/16	M14	0.5
CPEUB312	5/16" OD	2.1	0.9	3/4	M16	0.5
CPEUB375	3/8" OD	2.5	1	7/8	M20	0.7

Elbow Bulkhead

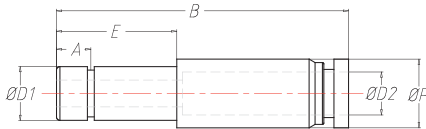


Reducer



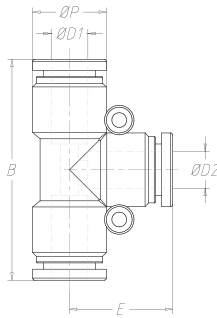
Part Number	ØD1	ØD2	B	ØP
CPRU250-156	1/4"	5/32"	1.3	0.5
CPRU312-250	5/16"	1/4"	1.5	0.5
CPRU375-312	3/8"	5/16"	1.8	0.7
CPRU500-375	1/2"	3/8"	1.8	0.8

Stem Reducer



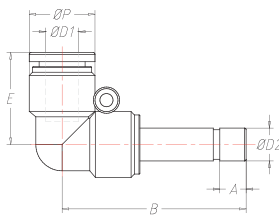
Part Number	ØD1	ØD2	A	B	E	ØP
CPSR250-156	1/4"	5/32"	0.2	1.6	0.6	0.3
CPSR312-250	5/16"	1/4"	0.2	1.7	0.7	0.4
CPSR375-312	3/8"	5/16"	0.3	1.8	0.9	0.5
CPSR500-375	1/2"	3/8"	0.3	2.1	0.9	0.6

Reducing Tee



Part Number	ØD1	ØD2	B	E	ØP
CPRT250-156	1/4"	5/32"	1.4	0.7	0.5
CPRT312-250	5/16"	1/4"	1.7	0.9	0.5
CPRT375-312	3/8"	5/16"	2.1	1.1	0.7
CPRT500-375	1/2"	3/8"	2.2	1.5	0.8

Tube to Stem Elbow Reducer



Part Number	ØD1	ØD2	A	B	E	ØP
CPTSER250-156	5/32"	1/4"	0.2	1.2	0.7	0.4
CPTSER312-250	1/4"	5/16"	0.2	1.4	0.7	0.5
CPTSER375-312	5/16"	3/8"	0.3	1.6	0.9	0.5
CPTSER500-375	3/8"	1/2"	0.3	1.8	1	0.7

Part Number	Tube ØD	E	ØP	Union Cross
CPX156	5/32" OD	0.6	0.4	
CPX250	1/4" OD	0.7	0.5	
CPX312	5/16" OD	0.8	0.5	
CPX375	3/8" OD	1.1	0.7	
CPX500	1/2" OD	1.1	0.7	

Part Number	Tube ØD	B	E	F	ØP	Union Branch
CPUB156	5/32" OD	2.2	0.7	1.4	0.5	
CPUB250	1/4" OD	2.5	0.7	1.6	0.5	
CPUB312	5/16" OD	3.1	0.9	1.9	0.7	
CPUB375	3/8" OD	3.7	1.1	2.3	0.8	

Part Number	ØD	B	E	ØP1	ØP2	Plug
CPP156	5/32" OD	1.1	0.5	0.1	0.1	
CPP250	1/4" OD	1.2	0.6	0.1	0.2	
CPP375	3/8" OD	1.6	0.8	0.1	0.4	

Features

- Multiple porting options to accommodate plumbing requirements
- Meter out functionality, free flow in opposite direction
- Knurled knob or screwdriver slot adjustment
- Lightweight plastic or metal body
- Oval Release button eases tubing disconnection (CPFC Series Only)
- Compact size
- Thread sealant is standard on male threads (10-32 UNF features a captive o-ring)



Flow Controls

Port mounted flow controls are ideal for adjusting the speed of extension and retraction for virtually any actuator.

Most double acting applications are best served with meter-out style flow controls, which control the flow of exhaust air as it leaves the cylinder. By reducing the exhaust air flow rate, the flow control reduces the speed of travel of the cylinder rod.

Finely threaded stems allow the gradual adjustment of controlled flow to match system requirements.

Materials of Construction

CPFC Series

Body: Polybutylene and nickel plated brass
 Needle: Nickel plated brass
 Seals: Buna-N
 Gripper Ring: Stainless Steel
 Collet (Release Button): Polyacetate
 Collar: Zinc Dichromate

FQPS Series

Adjusting knob & thread: Brass (RoHS approved)
 Body: Thermoplastic polymer
 Seals: Buna-N
 Gripper Ring: Stainless Steel
 Collet (Release Button): Polyacetate
 Collar: Zinc Dichromate

FQP Series

Banjo Connector: Chrome plated, zinc die cast
 Banjo Retaining Ring: Zinc plated steel
 Stem: High strength anodized aluminum alloy
 Adjusting Needle: Stainless Steel
 Seals: Buna-N

FQP Series

Banjo Connector: Chrome plated, zinc die cast
 Banjo Retaining Ring: Zinc plated steel
 Stem: High strength anodized aluminum alloy
 Adjusting Needle: Stainless Steel
 Seals: Buna-N
 Collet: Acetal copolymer
 Gripping Teeth: Stainless Steel
 Collet Retainer (if applicable): Brass
 Locknut: 416 Stainless Steel

Flow Control Selection Chart

Composite Body Right Angle Flow Controls

Part Number	Tube ØD	Recessed Screwdriver Slot	Adjustment style Knurled knob	Knurled knob with lockout	Inline Flow Controls
CPFC250	1/4" OD			X	
CPFC312	5/16" OD			X	
CPFC375	3/8" OD			X	

Part Number	Tube ØD	Port Size	Recessed Screwdriver Slot	Adjustment style Knurled knob	Knurled knob with lockout	FQPS Series w/ Push to Connect Tubing Connection
FQPS1	5/32" OD	10-32 UNF	X			
FQPS1K	5/32" OD	10-32 UNF			X	
FQPS12	1/4" OD	10-32 UNF	X			
FQPS12K	1/4" OD	10-32 UNF			X	
FQPS21	5/32" OD	1/8 NPT	X			
FQPS21K	5/32" OD	1/8 NPT			X	
FQPS2	1/4" OD	1/8 NPT	X			
FQPS2K	1/4" OD	1/8 NPT			X	
FQPS44	1/4" OD	1/4 NPT	X			
FQPS44K	1/4" OD	1/4 NPT			X	
FQPS46K	3/8" OD	1/4 NPT			X	

Flow Control Selection Chart

Metal Body Right Angle Flow Controls

FCP Series with Female Threaded Pipe Connection

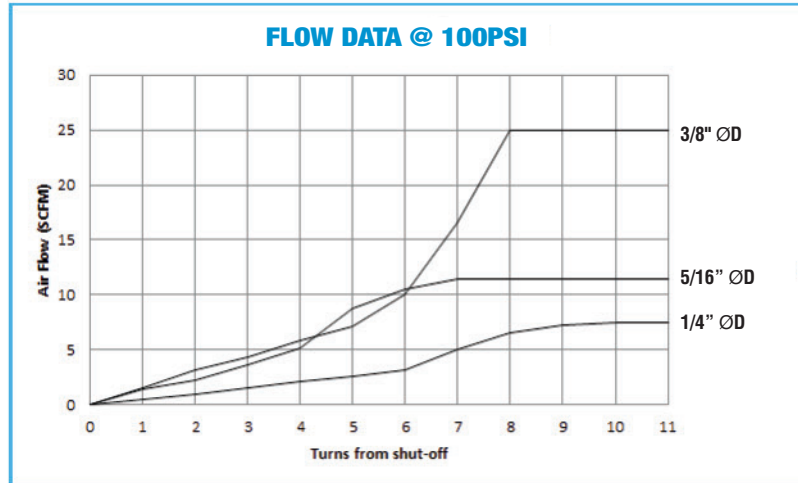
Part Number	Female Pipe Thread	Port Size	Recessed Screwdriver Slot	Adjustment style Knurled knob	Knurled knob with lockout
FCP1	10-32 UNF	10-32 UNF	X		
FCP1K	10-32 UNF	10-32 UNF		X	
FCP1L	10-32 UNF	10-32 UNF			X
FCP2	1/8 NPT	1/8 NPT	X		
FCP2K	1/8 NPT	1/8 NPT		X	
FCP2L	1/8 NPT	1/8 NPT			X
FCP4	1/4 NPT	1/4 NPT	X		
FCP4K	1/4 NPT	1/4 NPT		X	
FCP4L	1/4 NPT	1/4 NPT			X
FCP6	3/8 NPT	3/8 NPT	X		
FCP6K	3/8 NPT	3/8 NPT		X	
FCP6L	3/8 NPT	3/8 NPT			X
FCP8	1/2 NPT	1/2 NPT	X		
FCP8K	1/2 NPT	1/2 NPT		X	
FCP8L	1/2 NPT	1/2 NPT			X

FQP Series w/ Push to Connect Tubing Connection

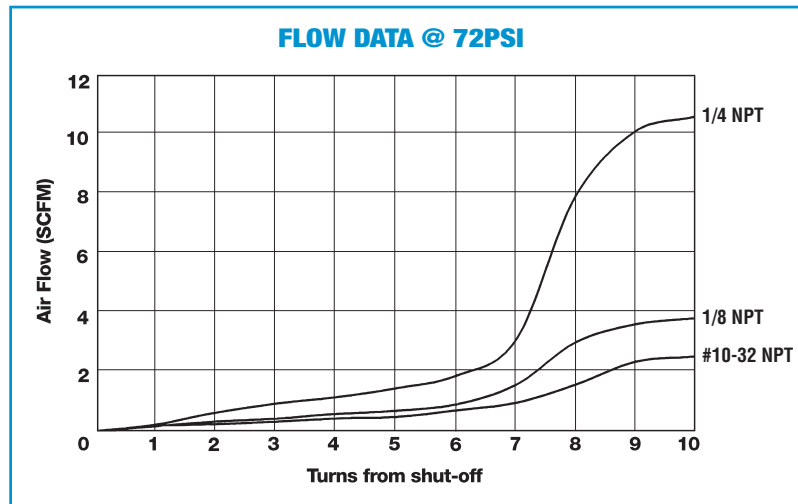
Part Number	Tube ØD	Port Size	Recessed Screwdriver Slot	Adjustment style Knurled knob	Knurled knob with lockout
FQP1	5/32" OD	10-32 UNF	X		
FQP1K	5/32" OD	10-32 UNF			X
FQP21	5/32" OD	1/8 NPT	X		
FQP21K	5/32" OD	1/8 NPT			X
FQP2	1/4" OD	1/8 NPT	X		
FQP2K	1/4" OD	1/8 NPT			X
FQP44	1/4" OD	1/4 NPT	X		
FQP44K	1/4" OD	1/4 NPT			X
FQP4	3/8" OD	1/4 NPT	X		
FQP4K	3/8" OD	1/4 NPT			X
FQP6	3/8" OD	3/8 NPT	X		
FQP6K	3/8" OD	3/8 NPT			X
FQP8	1/2" OD	1/2 NPT	X		
FQP8K	1/2" OD	1/2 NPT			X

Performance Data

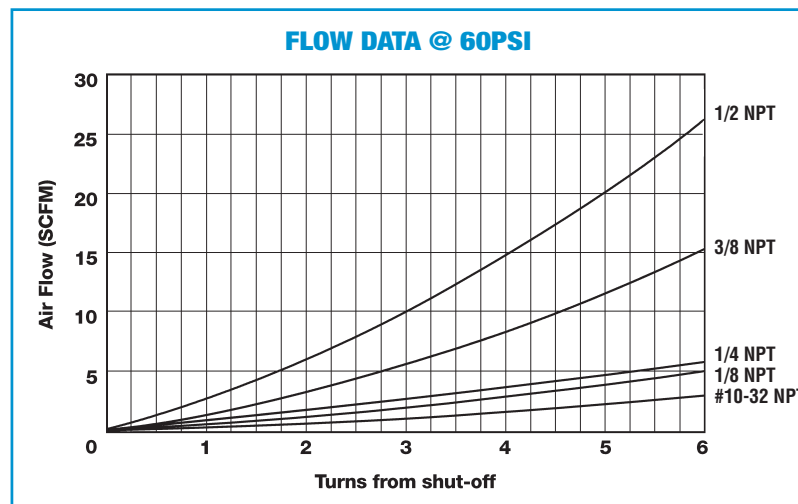
CPFC Series



FQPS Series

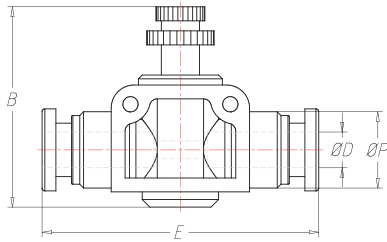


FQP & FCP Series



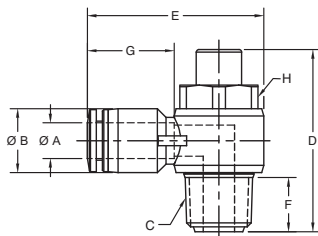
Composite Body Flow Controls

Inline Flow Control



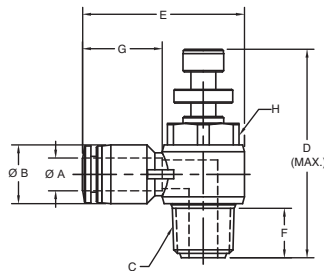
Part Number	Tube ØD	B	E	ØP
CPFC250	1/4" OD	1.6	1.8	0.5
CPFC312	5/16" OD	2.0	2.4	0.7
CPFC375	3/8" OD	2.1	2.9	0.8

FQPS Recessed Adjustment



Part Number	A Tube ØD	B	C	D	E	F	G	H
FQPS1	5/32" OD	.41	10-32 UNF	.91	.99	.14	.64	5/16
FQPS12	1/4" OD	.49	10-32 UNF	.91	1.31	.14	.69	5/16
FQPS2	1/4" OD	.49	1/8 NPT	1.24	1.26	.31	.69	7/16
FQPS21	5/32" OD	.41	1/8 NPT	1.24	1.20	.31	.64	7/16
FQPS44	1/4" OD	.49	1/4 NPT	1.46	1.41	.39	.69	19/32

FQPS Knob Adjustment



Part Number	A Tube ØD	B	C	D (min)	D (max)	E	F	G	H
FQPS1K	5/32" OD	.41	10-32 UNF	1.07	1.19	.99	.14	.64	5/16
FQPS12K	1/4" OD	.53	10-32 UNF	1.11	1.18	1.05	.14	.60	5/16
FQPS2K	1/4" OD	.51	1/8 NPT	1.40	1.56	1.18	.31	.60	7/16
FQPS21K	5/32" OD	.41	1/8 NPT	1.37	1.58	1.20	.31	.64	7/16
FQPS44K	1/4" OD	.49	1/4 NPT	1.57	1.80	1.41	.39	.69	19/32
FQPS46K	3/8" OD	.70	1/4 NPT	1.64	2.00	1.62	.50	.90	14mm

Needle Valves

We offer a range of Needle Valves, allowing for controlled flow of both the air intake and exhaust through the same valve. A needle valve can control a double acting cylinder's extension and retraction by controlling the volume of air entering the cylinder and the volume of air leaving the cylinder.

For additional dimensional information, reference FQP Recessed Adjustment Flow Controls on page 17. For example, reference FQP1 for QNV1 dimensions.

Part Number	Tube Size	Port Size	Cv
QNV1	5/32" OD	10-32 UNF	.09
QNV1K	5/32" OD	10-32 UNF	.09
QNV2	1/4" OD	1/8 NPT	.21
QNV2K	1/4" OD	1/8 NPT	.21
QNV44	1/4" OD	1/4 NPT	.44
QNV44K	1/4" OD	1/4 NPT	.44
QNV6	3/8" OD	3/8 NPT	.73
QNV6K	3/8" OD	3/8 NPT	.73

Metal Body Flow Controls

Part Number	A	B	C	D	E	F	H	FCP Recessed Adjustment
FCP1	10-32 UNF	.50	10-32 UNF	.42	.91	.47	7/16	
FCP2	1/8 NPT	.58	1/8 NPT	1.7	1.12	.62	9/16	
FCP4	1/4 NPT	.75	1/4 NPT	2.35	1.36	.75	11/16	
FCP6	3/8 NPT	.80	3/8 NPT	2.46	1.63	.97	7/8	
FCP8	1/2 NPT	.97	1/2 NPT	3.16	2.12	1.25	1-1/8	

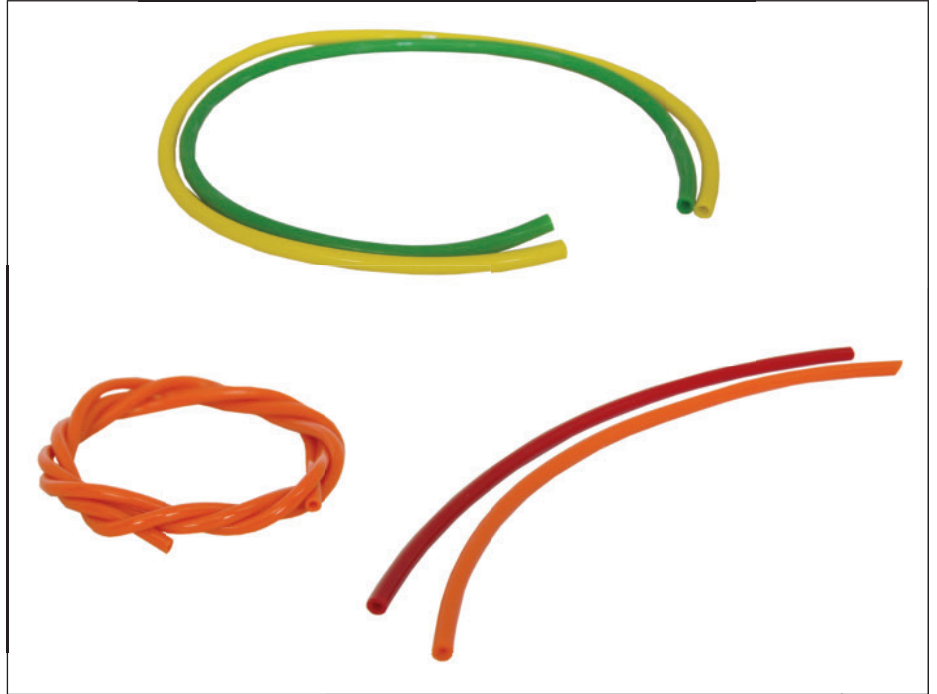
Part Number	A	B	C	D (knob)	D (lock nut)	E	F	G (lock hex)	H	FCP Knob Adjustment
FCP1K (knob)	10-32 UNF	.50	10-32 UNF	1.75	1.80	.91	.47	1/4	7/16	
FCP1L (lock nut)				1.75	1.80					
FCP2K (knob)	1/8 NPT	.58	1/8 NPT	2.12	2.14	1.12	.62	11/32	9/16	
FCP2L (lock nut)				2.12	2.14					
FCP4K (knob)	1/4 NPT	.75	1/4 NPT	2.87	2.89	1.36	.75	7/16	11/16	
FCP4L (lock nut)				2.87	2.89					
FCP6K (knob)	3/8 NPT	.80	3/8 NPT	3.02	3.02	1.63	.97	9/16	7/8	
FCP6L (lock nut)				3.02	3.02					
FCP8K (knob)	1/2 NPT	.97	1/2 NPT	3.89	3.89	2.12	1.25	5/8	1-1/8	
FCP8L (lock nut)				3.89	3.89					

Part Number	A Tube ØD	B	C	D	E	F	H	FQP Recessed Adjustment
FQP1	5/32" OD	.5	10-32 UNF	1.42	1.00	.47	7/16	
FQP2	1/4" OD	.58	1/8 NPT	1.70	1.24	.62	9/16	
FQP21	5/32" OD	.58	1/8 NPT	1.70	1.21	.62	9/16	
FQP4	3/8" OD	.75	1/4 NPT	2.34	1.46	.75	11/16	

Part Number	A Tube ØD	B	C	D (max)	E	F	H	FQP Knob Adjustment
FQP1K	5/32" OD	.5	10-32 UNF	1.71	1.00	.47	7/16	
FQP2K	1/4" OD	.58	1/8 NPT	2.12	1.24	.62	9/16	
FQP21K	5/32" OD	.58	1/8 NPT	2.12	1.21	.62	9/16	
FQP4K	3/8" OD	.75	1/4 NPT	2.91	1.46	.75	11/16	

Features

- Variety of colors available to color code lines in an application
- Several sizes to accommodate Pneumadyne push-in fittings
- Highly flexible with excellent memory
- Vacuum to 28" Hg
- Kink resistant



95A Polyurethane Tubing

Recommended for use with push-in fittings, Pneumadyne's 95A durometer polyurethane tubing is available in a variety of colors to fit application requirements.

This extremely flexible and kink resistant tubing is ether-based and has excellent memory. The tubing can be bent and stretched in a circuit but will always return to its original shape.

Performance Data

Temperature Range: -40° to 160°F

Vacuum: to 28" Hg

Media: Air or Fluid Compatible with Polyurethane

Diameter Tolerances: 1/8 - 9/16: +/- .005

3/4: +/- .007

Metric: +/- .127 mm

95A durometer polyurethane tubing is a slightly harder compound than other durometers which increases wall rigidity to enable it to work with most brands of push-in fittings. It offers outstanding toughness and significantly higher working pressures, yet sacrifices very little flexibility.

Temperature consideration: Thermoplastic tubing is affected by temperature. Careful consideration must be given to the reduced pressure capabilities of tubing as temperatures are increased.

Product Number Diagram

95A Polyurethane Tubing


PU250F-0

Product Line
PU = Polyurethane

Tube OD
125 = 1/8 OD
156 = 5/32 OD (4mm)
250 = 1/4 OD
375 = 3/8 OD
500 = 1/2 OD
8 = 8 mm (5/16 OD)

Durometer
F = 95A

Color
0 = Clear
2 = Black
3 = Red
4 = Blue
5 = Green
6 = Yellow
7 = Orange
27 = Transparent Blue
28 = Transparent Yellow

Part Number	Tube ØD	Tube ID	Durometer	Working Pressure psi at 75 F	Standard Colors	Package	95A Polyurethane Tubing
PU-125F-*	1/8" OD	1/16	95A	225	0,2,3,4,5,6,7	250' Box	
PU-156F-*	5/32" OD	3/32	95A	210	0,2,3,4,5,6,7	100' Box	
PU-250F-*	1/4" OD	1/8	95A	265	0,2,3,4,5,6,7,27	100' Box	
PU-375F-*	3/8" OD	.245	95A	170	0,2,3,4,5,6,8,9,27,28	100' Box	
PU-500F-*	1/2" OD	.320	95A	175	0,2	50' Bag	
PUM-8F-*	8mm	5mm	95A	190	0,2	100' Bag	

Part Number	Description	Tube Cutter
TC-1000	Tube Cutter	
TCR	Blade Replacement	

Precision cutter makes quick, clean and square cuts on all plastic tubing materials.

Warranty

All BimbalPneumadyne (A wholly owned Subsidiary) products, including but not limited to cataloged standard products are warranted against defects in workmanship or material under normal conditions and usage for a period of three years from the date of shipment. BimbalPneumadyne (A wholly owned Subsidiary) product that has been repaired at the BimbalPneumadyne (A wholly owned Subsidiary) factory carries a warranty against defects in workmanship and materials for a period of one year from the date of shipments.

BIMBAIPNEUMADYNE (A WHOLLY OWNED SUBSIDIARY) MAKES NO EXPRESS OR IMPLIED WARRANTY OF MERCHANTABILITY AND NO EXPRESS OR IMPLIED WARRANTY THAT THE PRODUCT SHALL BE FIT FOR ANY PARTICULAR PURPOSE AND NO OTHER EXPRESS OR IMPLIED WARRANTIES WHICH EXTEND BEYOND THE DESCRIPTION ON THE FACE HEREOF, ALL OF WHICH HAVE BEEN EXPRESSLY DISCLAIMED. BIMBAIPNEUMADYNE (A WHOLLY OWNED SUBSIDIARY) MAKES NO WARRANTY AS TO THE APPROPRIATENESS OF THE PRODUCT AS AN INTEGRAL PART OF ANY SUB-ASSEMBLY OR ASSEMBLY, OR OTHER END PRODUCT.

THIS WARRANTY DOES NOT EXTEND TO ANY PRODUCT WHICH HAS BEEN SUBJECT TO MISUSE, TAMPERING, ACCIDENT, ABUSE, NEGLIGENCE, NORMAL WEAR AND TEAR, ABNORMAL USE, IMPROPER MACHINING, IMPROPER INSTALLATION, IMPROPER STORAGE, IMPROPER MAINTENANCE OR OTHER APPLICATION IN A WAY THAT DOES NOT MEET THE NORMAL USE OF THE PRODUCT OR IS AT VARIANCE FROM DOCUMENTED SPECIFICATIONS, DRAWINGS AND TEST PROCEDURES.

BIMBAIPNEUMADYNE'S (A WHOLLY OWNED SUBSIDIARY) LIABILITY WITH RESPECT TO THE PRODUCT PROVED TO ITS SATISFACTION TO BE DEFECTIVE SHALL BE LIMITED TO REPAIR, REPLACEMENT, OR REFUND OF THE PURCHASE PRICE, AT BIMBAIPNEUMADYNE'S (A WHOLLY OWNED SUBSIDIARY) ELECTION, AND IN NO EVENT SHALL BIMBAIPNEUMADYNE'S (A WHOLLY OWNED SUBSIDIARY) LIABILITY EXCEED THE PURCHASE PRICE OF THE PRODUCT. BIMBAIPNEUMADYNE (A WHOLLY OWNED SUBSIDIARY) SHALL NOT BE SUBJECT TO ANY OTHER OBLIGATIONS OR LIABILITIES, WHETHER ARISING OUT OF BREACH OF CONTRACT OR WARRANTY, TORT (INCLUDING NEGLIGENCE), OR OTHER THEORIES OF LAW WITH RESPECT TO PRODUCTS SOLD OR SERVICES RENDERED BY BIMBAIPNEUMADYNE (A WHOLLY OWNED SUBSIDIARY), OR ANY UNDERTAKINGS, ACTS OR OMISSIONS RELATING THERETO. WITHOUT LIMITING THE GENERALITY OF THE FOREGOING, BIMBAIPNEUMADYNE (A WHOLLY OWNED SUBSIDIARY) SPECIFICALLY DISCLAIMS ALL LIABILITY FOR PROPERTY OR PERSONAL INJURY DAMAGES, PENALTIES, SPECIAL OR PUNITIVE DAMAGES, AND DAMAGES FOR LOST PROFITS OR OTHER FORMS OF ECONOMIC LOSS. BIMBAIPNEUMADYNE (A WHOLLY OWNED SUBSIDIARY) SHALL NOT BE LIABLE FOR ANY CONSEQUENTIAL, INCIDENTAL, INDIRECT, COMPENSATORY OR CONTINGENT DAMAGES WHATSOEVER, EVEN IF IT HAS BEEN ADVISED OF THE POSSIBILITY OF SUCH DAMAGES.

PRODUCT ENHANCEMENTS RESULTING FROM OUR CONTINUING QUALITY IMPROVEMENT EFFORT MAY NECESSITATE CHANGES IN SPECIFICATION WITHOUT NOTICE.

ALL PRODUCT IS SOLD F.O.B. SHIPPING POINT. PRICES ARE SUBJECT TO CHANGE WITHOUT NOTICE.

This warranty shall be governed by the laws of the State of Illinois and Bimba expressly disclaims the application of the United Nations Convention on Contracts for the International Sale of Goods (CISG).

Product and catalog updates can be downloaded from

www.bimba.com

Your stocking distributor is:



Pneumadyne, Inc.

14425 23rd Ave N Plymouth, MN 55447-4076
Phone: 763-559-0177 Toll Free: 888-559-0177 Fax: 763-559-0547
Email: sales@pneumadyne.com www.pneumadyne.com

Bimba Manufacturing Headquarters

P.O. Box 68 Monee, Illinois 60449-0068
Phone: 708-534-8544 Toll Free: 800-44-BIMBA Fax: 708-235-2014
Email: cs@bimba.com www.bimba.com

BIMBA BRANDS | ACRO | MEAD | MFD | PNEUMADYNE | TRD

PNEUMATIC • ELECTRIC • HYDRAULIC ACTUATORS FITTINGS — MANIFOLDS — VALVES — AIR PREPARATION — SAFETY & PRODUCTION



Worldwide distribution means there is a professional stocking
Bimba distributor nearby ready to service your needs.



BIMBA IS AN ISO 9001 COMPANY

© Copyright 2014 Bimba Manufacturing Company, PND-FN-0414 Effective April, 2014. All Rights Reserved.