

We make things MOVE

Pneumatic Gripper System (BPGS) High Performing Yet Rugged Gripping Solution

Bimba's Pneumatic Gripper System (BPGS) provides a versatile yet rugged gripping solution for a wide range of applications. With its vast array of jaws, pads, and custom grippers this system will fulfill various needs for your specific application.

Bimba developed this new series to expand its current line of angular and parallel grippers and to offer a high gripping force solution for large or heavy objects with various jaws to choose from. Bimba offers angular, regular, chisel, flange, and shovel jaw types. Jaw types are recommended for certain industries:

Angular & Regular Jaws:

- > General purpose gripper
- > Pick and place
- > Material transfer
- > Clamping

- > Indexing

Regular, Chisel, Flange & Shovel Jaws:

- > Sheet metal handling
- > Automated welding
- > Recreational vehicle
- > Heavy truck
- > White goods (Appliances)
- > Construction equipment
- > Metal plating and coating
- > Rail cars
- > Military vehicle manufacturing
- > Thermoforming

Benefits:

- > High gripping force allows for picking up large heavy objects in demanding environments
- > The long-lasting hardened steel chassis ensures that the gripper can withstand hard impacts with the work piece and

- other items within the environment
- > Easily repairable by using a single wrench reducing downtime
- > Gripper locks in closed position for safety

Technical Features:

- > High gripping forces up to 450 lbs. at 80 PSI
- > Fast actuation time:
 - 0.05 second close
 - 0.09 second open
 - 425 cycles per minute
- > Compact in size:
 - 5.34" x 1.65" x 1.04"
- > Optional sensors:
 - Part presence
 - Double blank

Ordering Information

Body Style		Sensor Type		Sensor Output		Indirect Sensor Connector & Location*		In-Pad Sensor Connector & Location*	
10	Standard 1.20"x1.20" bolt pattern	D	Indirect Double Blank	N	NPN	R	M8/Right	A	Reg (0°)/Micro M8/Top/Right
		H	Indirect Part Present	P	PNP	L	M8/Left	B	Reg (0°)/Micro M8/Top/Left
		C	Indirect Open Closed (HR, HF only)	2	2 Wire (3 Pin)	E	M12/Right	C	Reg (0°)/Micro M8/Bottom/Right
11	Crossover 0.90"x0.90" bolt pattern	I	In-Pad	T	2 Wire (4 Pin)	W	M12/Left	D	Reg (0°)/Micro M8/Bottom/Left
		N	No Sensor	U	No Sensor			L	No Sensor

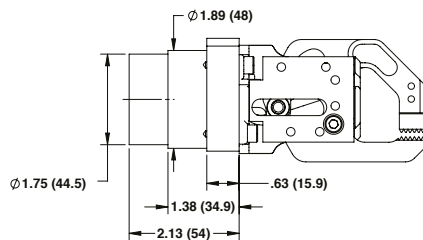
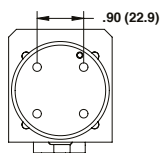
BPGS10Z20DNR1S4E

Jaw*		Jaw Angle*		Material Thickness*		Pad Width		Pad Style*		Port Orientation	
HR	Hot Metal Regular	20	22° x 0°	1	0.50-2.00mm	S	0.5"	0	0	E	Top 1/8" NPS
HF	Hot Metal Flange	21	22° x 14°	3	2.01-3.50mm	M	1.0"	1	15	F	Top 1/8" Rc
F	Flange	22	22° x 22°	5	3.51-5.00mm	D	1.5"	2	30	L	Right 1/8" NPS
R	Regular	40	45° x 0°	R	0.50-2.5mm	U	No Pads	4	45	M	Right 1/8" Rc
S	Shovel, No teeth	41	45° x 14°	N	No Pads			R	Rubber	E	Bottom 1/8" NPS
Z	Angular	42	45° x 22°					S	Smooth	F	Bottom 1/8" Rc
		44	45° x 45°					C	Convex	E	Left 1/8" NPS
		70	70° x 0°					L	No Pads	U	Left 1/8" Rc
		71	70° x 14°								
		73	70° x 35°								
		77	70° x 70°								

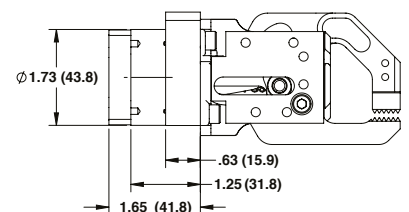
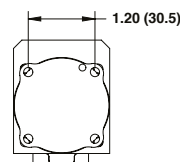
*Note: Not all options are shown, options are limited by jaw style selection, sensor and/or pad.
Please see full catalog for more details on available options and configurations.

Dimensions

BPGS10



BPGS11



Bimba

25150 S. Governors Hwy
University Park, IL 60484

Tel: +1 800 44 BIMBA

Fax: +1 708 235 2014

Email: cs@imi-precision.com

Website: www.bimba.com

Due to our policy of continuous development, Bimba reserve the right to change specifications without prior notice.

IMI Precision Engineering operates four global centres of technical excellence and a sales and service network in 75 countries, as well as manufacturing capability in the USA, Germany, China, UK, Switzerland, Czech Republic, Mexico and Brazil.

For information on all IMI Precision Engineering companies visit www.imi-precision.com

Supported by distributors worldwide.